



A Family and Employee Owned Company

Kit Installation Instructions

1662000B

Hydr-O-Rail Guide Rail Adapter Kit

for LEP Dual Seal Grinder Pumps

Kit #K001877

*LEP 3–7.5 hp ordinary location pumps
(with configuration code C28 and previous)*

LEP 3–7.5 hp hazardous location pumps

Kit #K001890

LEP 10–15 hp pumps

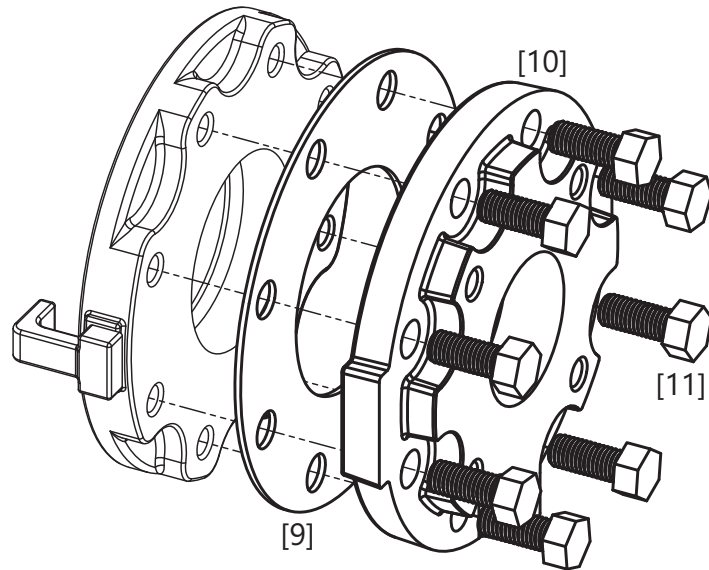
Kit Contents:

Item	Description	Qty
[1]	Adapter Lower Guide Bracket	1
[2]	Adapter Guide Plate	2
[3]	Screw - Flange Head, 3/8"-16 1"	4
[4]	Nut - 3/8"-16 UNC, 18-8	4
[5]	1/2-13 Socket Head Cap Screw 1-1/4	6
[6]	Adapter Support Leg	3
[7]	Nut, 1/2-13 316 SS	3
[8]	3" ANSI Neoprene Gasket	1
[9]	4" ANSI Neoprene Gasket	1
[10]	3-4" ANSI Compact Flange Adapter	1
[11]	5/8-11 X 1.5" SS Hex Head Cap Screw	12
[12]	5/8 Washer 18-8 SS	4

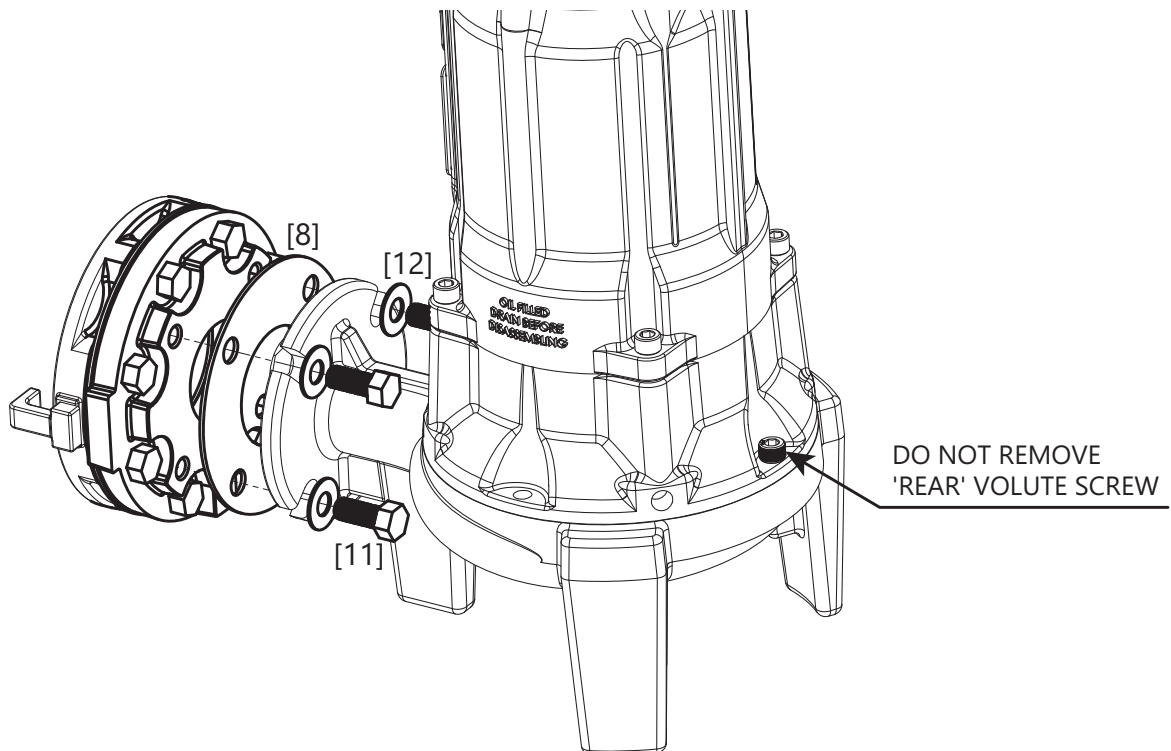
Hydr-O-Rail is part of a Pentair Hydromatic® System

Installation:

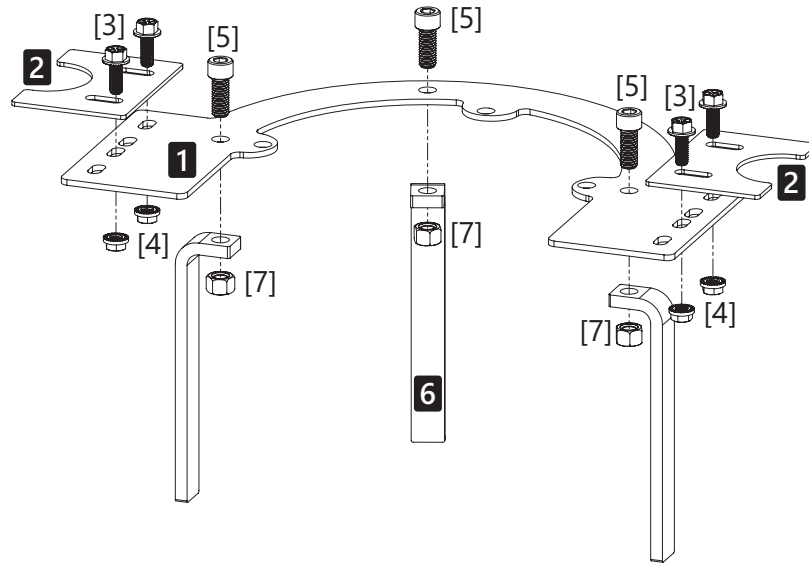
Step 1: Fasten the **Compact Flange Adapter [10]** to the existing Sealing Flange, inserting the **4" Gasket [9]** between. Ensure the ears on the Compact Flange Adapter align with the fingers on the existing Sealing Flange.



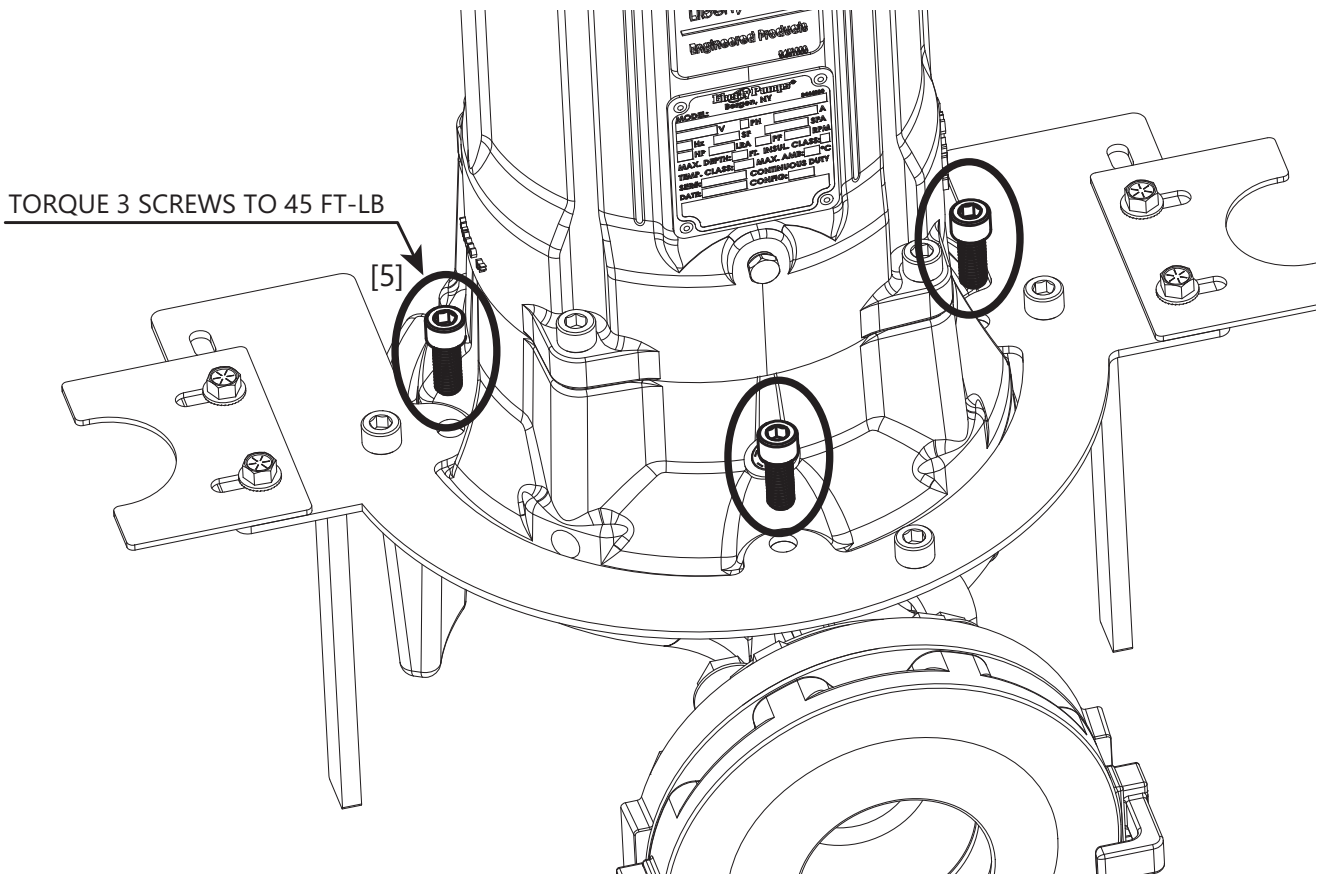
Step 2: Fasten the assembled Flange Adapter to the pump discharge, inserting the **3" Gasket [8]**. Three of the socket head cap screws that fasten the volute to the pump motor must be removed. Do not remove the screw opposite of the pump discharge.



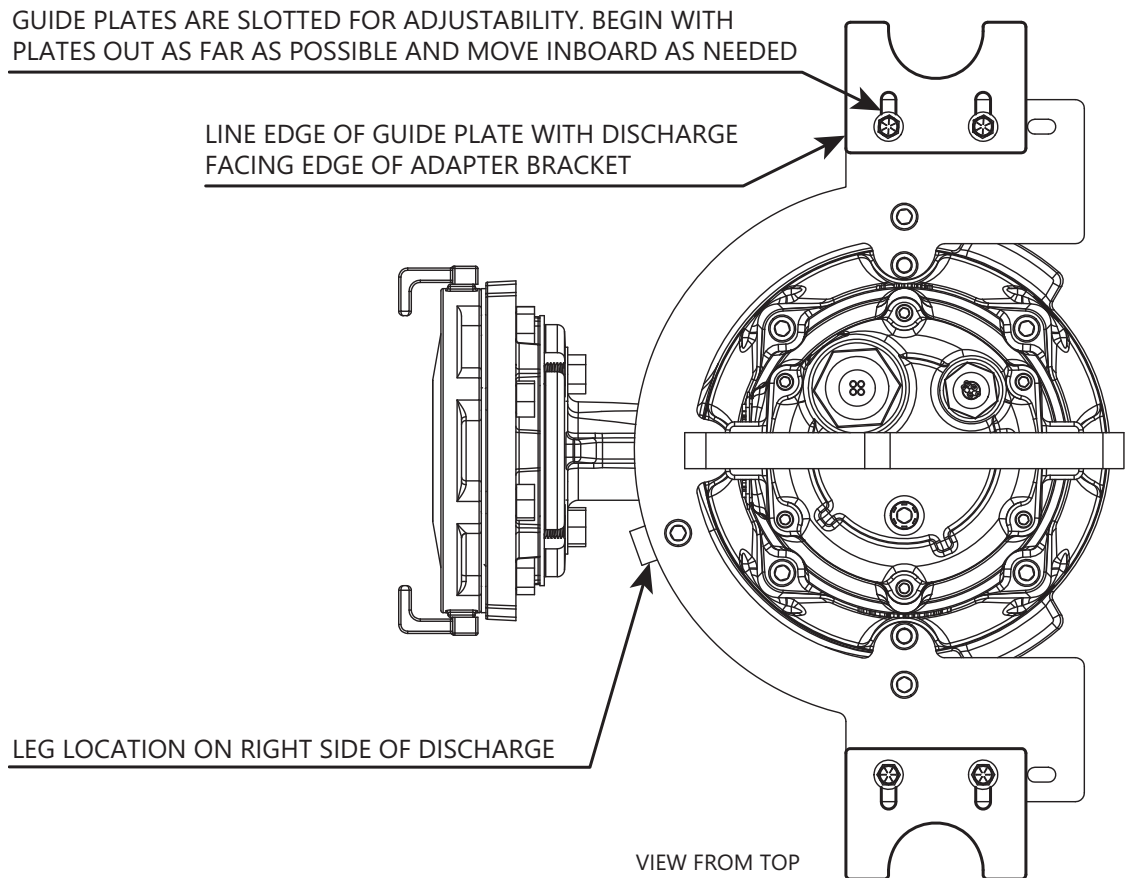
Step 3: Assemble the Adapter Guide Bracket Assembly. The three **Support Legs** [6] and two **Guide Plates** [2] must be fastened to the **Main Adapter Bracket** [1] using included hardware as shown/identified. Note the orientation of the legs (short portions facing in at each other) and the hole selection for the guide plates.



Step 4: Install the Guide Bracket Assembly on the pump. In order to do this, the pump should be lifted about 2" off the ground, or tipped on its back (discharge facing up in the air). Fasten the Guide Bracket Assembly to the pump using the provided **1/2-13 Socket Head Cap Screws** [5]. Do not reuse the original volute screws. Torque the three screws to 45 ft-lb.



Step 5: Guide Plate Adjustment: The guide plates are adjustable to account for system installation variations and wear or corrosion. Guide Plates can be adjusted fore and aft and also inboard or outboard. Start with the edge of the Guide Plate lined up with the discharge facing edge of the Adapter Bracket. Both Guide Plates should also be moved out as far as possible.



Step 6: Installation complete.

